

Series 37

- ▶ Installs between pipe flanges, eliminating valve body.
- ▶ Offers minimal face-to-face dimension—only the thickness of the flange.
- ▶ Features unique, maintenance-free, one-piece elastomer check sleeve design.
- ▶ Eliminates chatter—silent, non-slamming.
- ▶ Closes on entrapped solids.

Materials of Construction

- ▶ Valves are available in pure gum rubber, neoprene, Hypalon®, buna-N, Viton® and EPDM.
- ▶ ANSI Class 125 Flanges, DIN PN6, PN10, PN16.
- ▶ Special coating available.

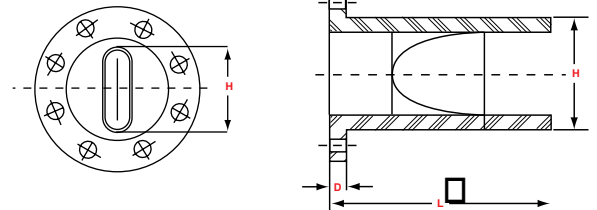
Tideflex® Technologies' Series 37 Flanged InLine Check Valve is a simple, reliable, cost-effective solution to backflow problems. Designed to be installed between twomating flanges, the Series 37 eliminates the need for a valve body.

With only one moving part, the maintenance-free rubber check sleeve, the Series 37 InLine Check Valve is simple in design. Sliding, rotating, swinging and spring parts are eliminated. There are no seats to corrode or packing to maintain. In addition, the Series 37 is a passive design, requiring no external source of air or electricity to operate. The result is reduced operating costs.

The Series 37 InLine Check Valve can be ordered in a variety of elastomers. Flanges conform to ANSI B16.1 Class 125 specifications. Special custom designs or metric flanged models are also available. When ordering, specify line pressure, backpressure and whether an SST is required.



The pressure drop of the Series 37 is increased because of the smaller I.D. required to fit the check valve in the line.



Dimensions Series 37 Flanged InLine Check Valve

Nominal Size* (Pipe I.D.)	Length L	Height of Bill H	Flange Thickness D	Max. Backpressure (psi)	
				Standard Tideflex®	With Saddle Support
2	5	1 7/8	3/8	150	N/A
3	5 1/2	2 7/8	3/8	100	N/A
4	7	3 7/8	3/8	75	150
6	11	5 7/8	3/8	75	150
8	12 1/2	7 7/8	1/2	60	125
10	15 1/2	9 7/8	1/2	45	75
12	18 1/2	11 7/8	1/2	35	75
14	22	13 3/4	5/8	25	70
16	23	15 3/4	3/4	20	60
18	24	17 3/4	1	15	45
20	32	19 3/4	1	10	40
24	37	23 3/4	1	10	40
30	41	29 3/4	1 1/2	8	40
36	47	35 3/4	1 1/2	8	35
42	49	41 1/2	1 3/4	5	25
48	52	47 1/2	1 3/4	5	25
54	57	53 1/2	2	5	CONTACT FACTORY
60	64	59 1/2	2	5	
72	73	71 1/2	2	5	

Numbers indicate maximum dimensions in inches.
* Larger sizes available upon request.