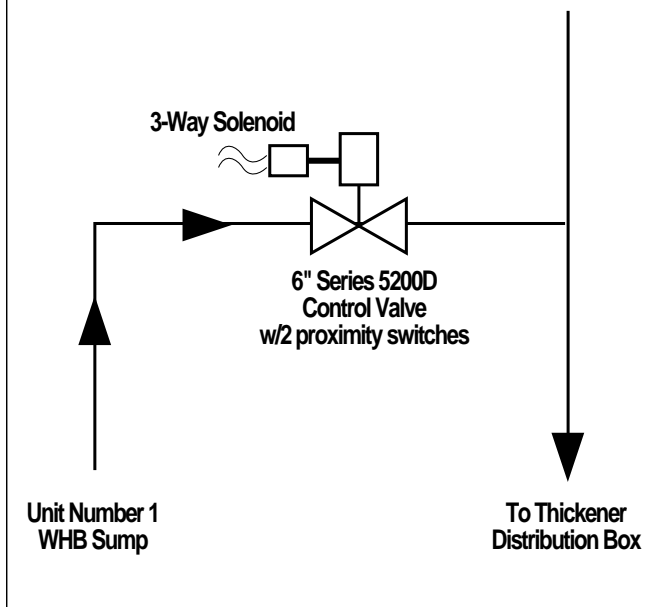


Application Data

Power ♦ Thickener Control ♦ Control Valves



Series 5200D-Port Control Valve Used for Thickener Control



This application deals with on/off control for the addition of high lime/oil/water fluid to a thickener distribution box. Globe style valves are normally used in this application, but these valves experience sticking of the plug onto the seat.

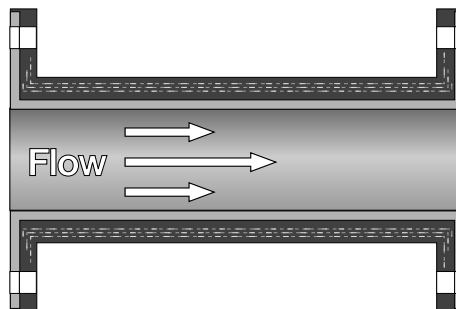
A Red Valve Series 5200D was selected for this application to resolve the sticking and non-distribution of process fluid to the thickener. The valve is electrically wired into a common system so when the proximity switch senses a position, it will open or close the valve as the thickener requires more process fluid. A total of four 6" valves were purchased for this generating plant.

Red Valve's complete product line of Control Pinch Valves are built to meet our customer's exact flow requirements.

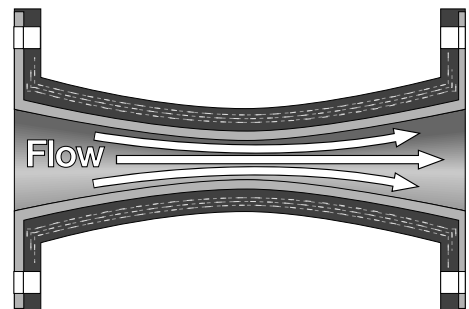
Pinch Valve Flow Pattern is Superior to Globe Valve's



Globe Valve—flow pattern is turbulent.



A Pinch Valve In Open Position Is Like A Piece Of Pipe



In Throttled Position, Flow Is Still Streamline – No Turbulence

