



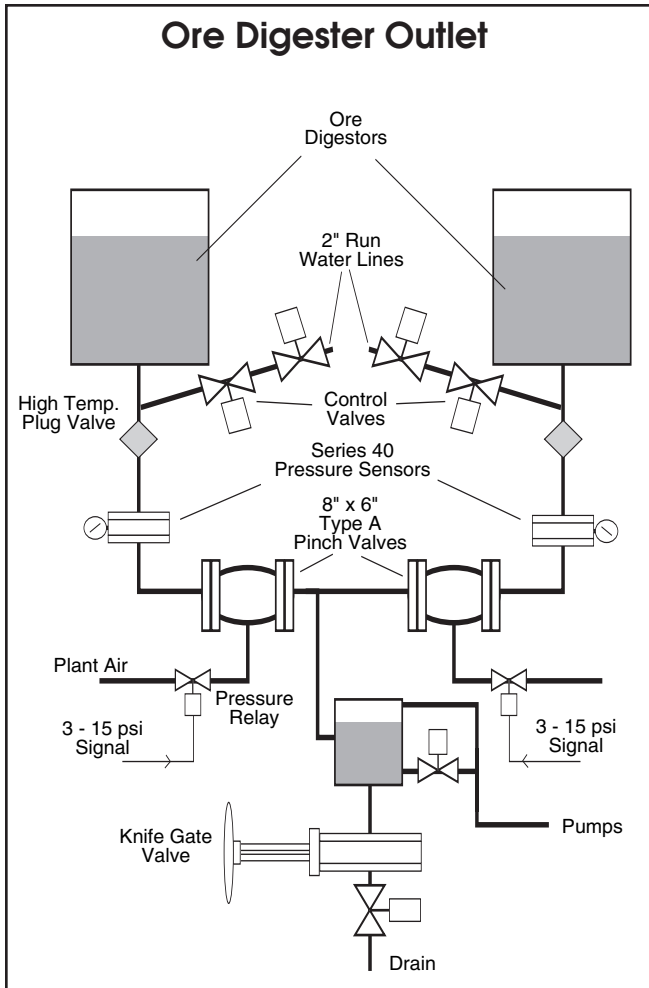
Founded in 1953  
Red Valve Company, Inc.

# Mining

## application study

### Ore Digester Outlet • Type A Pinch Valve

Air Operated Valves



In this application Pinch Valves are used as throttling isolation valves in a Titanium Ore refinery in Canada. Absolute shut-off of isolation is necessary because a contaminated digester would be a major expense to shut down, drain, clean, recondition and retest. Estimates are in excess of \$1,000,000 USD.

Valve of choice - DW Pinch Valves for long life. The media is a 75% Ore Slurry in water at low pressure of 30 psig (2 Bar) G) at 190° F (85° C). The best Sleeve material for this job is Red Valve's Polyurethane Pinch Valve Sleeve.