

## Series 5800 Electric Actuated Control Pinch Valve

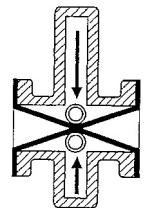


- Electric actuation provides precise, accurate control.
- Sleeve is the only wetted part, resulting in constant breakaway torques.
- Centerline closure.
- Bi-directional, drop-tight shutoff.

The Series 5800 Electric Actuated Control Valve is reliable, maintenance free and cost effective. Replacing a plug valve, gate valve or ball valve is easy with the Series 5800 because it has the same face-to-face dimensions. There are no seats to grind, no stuffing box to repack and no packing gland to adjust, ever. The rugged, self-cleaning elastomer sleeve isolates all mechanical parts of the mechanism, so the breakaway torque remains constant.

Red Valve Series 5800 Control Valves close the sleeve on centerline and can be actuated with any standard electric motor operator. Declutch and override components are furnished as standard. Operators can be furnished as an integral part of the electric motor or with a remote station. Optional features include heaters, thermostats, explosion proof construction, position indicators, indication lights and proportioning control from a 4-20mA instrument signal.

The Series 5800 has the same face-to-face as gate, plug or ball valves, per ASME 16.10, up to 6" sizes. Optional 8", 10" and 12" are available with cone sleeve trims.



Closed

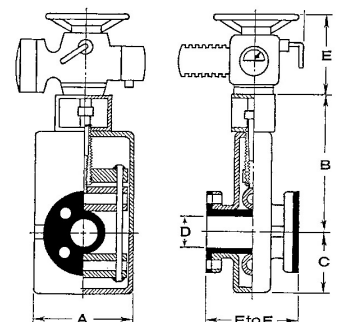
### Materials of Construction

- **Body:** Ductile iron or aluminum body.
- **Sleeves:** Pure Gum Rubber, Ethylene Propylene Diene Terpolymer (EPDM)\*, Acrylonitrile-Butadiene (NBR), Fluoroelastomer (FKM)\*, Chloroprene (CR)\*, Chlorosulfonated Polyethylene (CSM), Chloro-Isobutylene-Isoprene (CIIR).
- \* - White food grade options available.
- **Drilled and tapped flanges:** ASME B16.1 125 cast flanges.
- **Optional:** Cone sleeve trim options available to maximize sleeve life in service.

### SERIES 5800

FLANGE SIZE D	LENGTH F TO F	WIDTH A	DIMENSIONS in/mm			WORKING PRESSURE** psi/kPa	WEIGHT lbs/kg
			B	C	E		
1.00" 25mm	5.50 140	4.75 121	10.75 273	3.00 76	9.75 2.48	30 200	64 29
1.50" 40mm	6.50 165	6.00 152	12.63 321	3.75 95	9.75 2.48	30 200	86 39
2.00" 50mm	7.00 178	7.50 191	13.75 349	4.50 114	9.75 2.48	30 200	115 52
2.50" 65mm	7.50 191	8.25 210	14.25 362	4.75 121	9.75 2.48	30 200	127 58
3.00" 80mm	8.00 203	9.50 241	15.00 381	5.00 127	10.75 273	30 200	216 98
4.00" 100mm	9.00 229	10.50 267	15.25 387	5.25 133	10.75 273	30 200	245 111
5.00" 125mm	10.00 254	12.50 318	18.50 470	6.50 165	10.75 273	30 200	367 166
6.00" 150mm	10.50 267	15.00 381	20.50 521	8.00 203	10.75 273	30 200	341 155
8.00" 200mm	16.00 406	19.50 495	23.00 584	9.00 229	13.50 343	30 200	906 411
10.00" 250mm	20.00 508	24.00 610	25.00 635	10.00 254	13.50 343	30 200	1013 459
12.00" 300mm	24.00 610	27.50 699	27.00 686	11.00 279	13.50 343	30 200	1128 512

The 5800 has the same face-to-face dimensions as plug valves in sizes 1-6" (25-150mm).



\*Dimensions for larger sizes, consult factory.

\*\*Control valves for higher pressure, consult factory or reference Red Valve's Series 5200 and 5700 designs.