

Control Pinch Valve Accessories

Manual Override

The manual override actuator option is available on all Red Valve pneumatically actuated control valves. The unit consists of a handwheel or bevel gear actuator with a stem extension, an override yoke, a position indicator and a removable override engagement pin.



In normal operation, the manual override is disengaged. It is engaged when the valve cannot be operated automatically by the pneumatic actuator, for instance, if the plant air supply is shut down or the instrument air signal to a positioner is cut off. The manual override is available only as a factory-installed option; it cannot be retrofitted in the field.

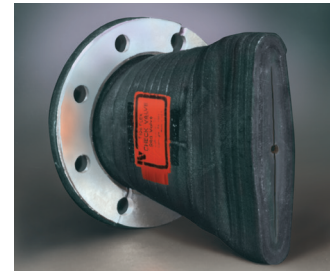
Pressure Sensors

Red Valve pressure sensors are the industry standard for protecting instrumentation and assuring accurate, dependable pressure measurement of slurry and corrosive fluids. Line pressure is sensed 360° through the flexible rubber sleeve. All instruments are isolated and protected from the process, assuring positive and accurate readings. Numerous styles of pressure gauges, transmitters and pressure switches are available.



Series TFO Flow Restrictor

The TFO Flow Restrictor is an elastomer variable orifice that induces backpressure and is designed to help eliminate cavitation on control valves in high-pressure drop applications. The variable flow characteristics are superior to an orifice plate restrictor and other similar devices placed in the line to restrict flow and create backpressure. The TFO is installed on the discharge end of a pipe or inline.



The pressure drop in a TFO increases in a near-linear pattern as the flow increases. This feature distinguishes the advantage of the TFO over orifice plates, where as the flow rate increases, the backpressure increases exponentially. The TFO is available in a flanged or slip on construction. The TFO's mounting dimensions are identical to the standard slip on TF-2 and the Series 35 flanged check valve.

Emissions-Tight Package

Red Valve's Emissions-Tight Package, the ET Package, provides a low-cost solution for fugitive emissions and is available on Series 9000 body designs. The design of the pinch valve is intrinsically safe because the sleeve isolates the flow, acting as the primary containment.



The ET Package, complete with a stem seal and a sealed body, provides a secondary containment. This assures that in the unlikely event of a sleeve rupture, the volatile organic compounds are kept within the confines of the valve body.

Automatic Leak Detection

The ET Package also includes a standard pressure gauge for local indication or an optional transmitter or switch that will send a remote signal in the event of a pressure change in the valve body, automatically indicating the detection of a leak.