

KDX - Series DX Knife Gate Valve



- Abrasion-resistant slurry sleeves are field replaceable
- 100% full-port design provides bi-directional, drop-tight shutoff
- Eliminates packing
- Wiper blade cleans debris from heavy-duty Stainless Steel gate as it strokes
- Optional open/close lock-out feature

The Series DX Knife Gate Valve is the most durable and user-friendly valve available for difficult slurry applications. The fully elastomer-lined Series DX Valve prevents slurry build-up or dewatering by eliminating the seat cavity. Ductile cast iron bodies provide enhanced performance when external and internal factors require a less brittle and more malleable material.

When open, the Series DX Valve's reinforced elastomer sleeves seal against each other, providing a 100% full-port opening which minimizes turbulence and wear. In this open position, the seats isolate and protect all metal parts of the valve from coming in contact with the process. When closed, the sleeves provide a drop-tight seal in both directions.

Each time the Series DX Valve strokes, it discharges a small amount of slurry, which keeps the gate path and seat area clear of entrapped particulates. Unlike traditional knife gate valves, the DX prevents slurry build-up in the seat area, which might otherwise prohibit the valve's ability to close. Both the slurry sleeves and gates are field-replaceable.

A wiper blade mounted on top of the valve prevents the gate lubricant and process from leaking through the top. The Series DX Valve's innovative design eliminates the need for traditional packing. This wiper blade also prevents external grit from entering the valve body. To control slurry discharging from the slot in the valve, a plate style splash guard is utilized. Optional systems to pipe or flush slurry away are also available.

Materials of Construction

- **Body:** 3-24" ductile cast iron; 3" and larger fabricated carbon steel
- **Gate:** 316 Stainless Steel, 17-4 pH, Hastelloy C-276
Other materials are available, contact Red Valve.
- **Optional Gate Coating:** Polytetrafluoroethylene (PTFE)
- **Elastomers:** Ethylene Propylene Diene Terpolymer (EPDM), Acrylonitrile-Butadiene (NBR), Chloroprene (CR)
- **Flange Drillings:** ASME 150, ASME 300, ASME B16.1 125 cast flanges, AWWA C110 125 flanges, EN1092 PN 10, EN1092 PN 16.
Other drill patterns available upon request.
- **Optional:** Splash guard and pipe away containment

Series DX

VALVE SIZE	DIMENSIONS in/mm				MAX. OPERATING PRESSURE		WEIGHT lbs/kg
	Length F to F		HEIGHT CLOSED C	HEIGHT OPEN H	316 GATE psi/kPa	17-4 pH GATE psi/kPa	
	WITHOUT RETAINING FLANGES	WITH RETAINING FLANGES					
3" 80mm	5.88 149	6.88 175	17.13 435	20.38 518	100 690	150 1030	49 22
4" 100mm	5.88 149	6.88 175	18.25 464	22.63 575	100 690	150 1030	66 30
6" 150mm	6 152	7.00 178	21.06 535	27.18 690	100 690	150 1030	109 49
8" 200mm	6.25 165	7.25 184	26.56 675	34.50 876	100 690	150 1030	173 78
10" 250mm	---	8.88 226	32.44 824	43.63 1108	100 690	150 1030	222 101
12" 300mm	---	10.13 257	37.00 940	50.88 1292	100 690	150 1030	340 154
14" 350mm	---	10.13 257	43.63 1108	57.63 1464	100 690	150 1030	495 225
16" 400mm	---	11.00 279	47.50 1207	63.00 1600	100 690	150 1030	635 288
18" 450mm	---	12.13 308	52.53 1334	70.00 1778	100 690	150 1030	895 406
20" 500mm	---	14.13 359	57.94 1472	74.13 1883	100 690	150 1030	1060 481
24" 600mm	---	14.63 372	66.68 1694	86.94 2208	100 690	150 1030	2250 1021
30" 750mm	---	15.75 400	88.63 2251	120.63 3064	75 520	150 1030	2388 1083

Retaining rings are optional in valve sizes 3-8" and standard in valve sizes 10" and larger. 36", 42" and 48" available upon request.

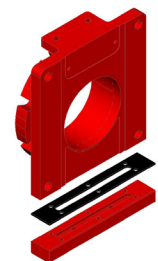


Plate Style Splash Guard

