

CTF - Tideflex® Series 35 Flanged Duckbill Check Valve



- 100% elastomer construction
- Will not rust or corrode
- Will not warp or freeze open or shut
- Custom-built to customer specifications
- Low cracking pressure, low head loss
- Eliminates backflow

The Tideflex® Series 35 Flanged Check Valve is manufactured identically to the Series TF-2 Check Valve, with the addition of an integral elastomer flange. The standard flange size drilling conforms to ASME 16.5 and 16.47 Class 150 standards. All other domestic and international standards, as well as customer specified flange dimensions, are available. The Series 35 is furnished with 3/8" thick steel back-up rings for installation.

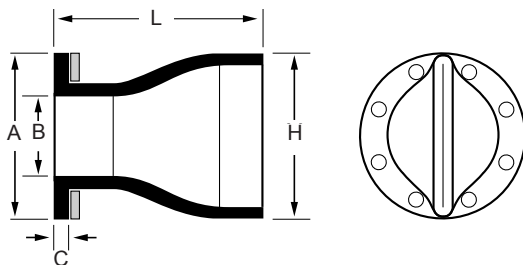
In some applications, a slip-over pipe check valve is not feasible because of an existing flange in the piping system or an existing flange cemented in the outfall piping system vault. In these cases, the Series 35 Check Valve is the solution.

The Series 35 is simple in design with only one part, the all-elastomer duckbill check valve. There are no seats or interference fits to corrode or freeze valve operation, making the Series 35 virtually maintenance free. The Series 35 seals completely around solids, making it ideal for fly ash, raw sewage, sludge, lime, mining slurries and many other abrasive and corrosive slurries.

Contact Red Valve for Series 35 backpressure ratings.

Materials of Construction

- **Elastomers:** Natural Rubber (NR), Ethylene Propylene Diene Terpolymer (EPDM)*, Acrylonitrile-Butadiene (NBR), Fluoroelastomer (FKM), Chloroprene (CR), Chlorosulfonated Polyethylene (CSM), Chloro-Isobutylene-Isoprene (CIIR), NSF/ANSI/CAN 61 and NSF/ANSI/CAN 372 certified EPDM
- **Retaining Rings:** 316 Stainless Steel, special alloys available



Series 35

| ASME FLANGE SIZE | DIMENSIONS in/mm | | | | |
|------------------|------------------|-------------------|--------------------|------------------|------------------|
| | FLANGE O.D. A | INSIDE DIAMETER B | FLANGE THICKNESS C | MAXIMUM LENGTH L | MAXIMUM HEIGHT H |
| 0.5" 15mm | 4.00 102 | 0.50 13 | 1.00 25 | 3.00 76 | 2.00 51 |
| 0.75" 20mm | 4.00 102 | 0.75 19 | 1.00 25 | 3.00 76 | 2.00 51 |
| 1" 25mm | 5.00 127 | 1.00 25 | 1.00 25 | 4.00 102 | 2.00 51 |
| 1.25" 32mm | 5.00 127 | 1.25 32 | 1.00 25 | 7.00 178 | 4.00 102 |
| 1.5" 40mm | 5.00 127 | 1.50 38 | 1.00 25 | 7.00 178 | 4.00 102 |
| 2" 50mm | 6.00 152 | 2.00 51 | 1.00 25 | 6.00 152 | 4.00 102 |
| 2.5" 65mm | 7.00 178 | 2.50 64 | 1.00 25 | 8.00 203 | 5.00 127 |
| 3" 80mm | 8.00 203 | 3.00 76 | 1.00 25 | 10.00 254 | 6.00 152 |
| 4" 100mm | 9.00 229 | 4.00 102 | 1.00 25 | 12.00 305 | 7.00 178 |
| 5" 125mm | 10.00 254 | 5.00 127 | 1.00 25 | 17.00 432 | 9.00 229 |
| 6" 150mm | 11.00 279 | 6.00 152 | 1.00 25 | 16.00 406 | 11.00 279 |
| 8" 200mm | 14.00 356 | 8.00 203 | 1.00 25 | 17.00 432 | 13.00 330 |
| 10" 250mm | 16.00 406 | 10.00 254 | 1.00 25 | 22.00 559 | 17.00 432 |
| 12" 300mm | 19.00 483 | 12.00 305 | 1.00 25 | 27.00 686 | 20.00 508 |

| ASME FLANGE SIZE | DIMENSIONS in/mm | | | | |
|------------------|------------------|-------------------|--------------------|------------------|------------------|
| | FLANGE O.D. A | INSIDE DIAMETER B | FLANGE THICKNESS C | MAXIMUM LENGTH L | MAXIMUM HEIGHT H |
| 14" 350mm | 21.00 533 | 14.00 356 | 1.00 25 | 26.00 660 | 22.00 559 |
| 16" 400mm | 24.00 610 | 15.25 387 | 1.00 25 | 28.00 711 | 27.00 686 |
| 18" 450mm | 25.00 635 | 17.50 445 | 2.00 51 | 32.00 813 | 27.00 686 |
| 20" 500mm | 28.00 711 | 19.25 489 | 2.00 51 | 35.00 889 | 33.00 838 |
| 22" 550mm | 30.00 762 | 21.25 540 | 2.00 51 | 37.00 838 | 33.00 838 |
| 24" 600mm | 32.00 813 | 24.00 610 | 2.00 51 | 43.00 1092 | 40.00 1016 |
| 30" 750mm | 39.00 991 | 29.50 749 | 2.00 51 | 46.00 1168 | 49.00 1245 |
| 32" 800mm | 42.00 1067 | 32.00 813 | 2.00 51 | 47.00 1194 | 54.00 1372 |
| 36" 900mm | 46.00 1168 | 35.25 895 | 2.00 51 | 48.00 1219 | 62.00 1575 |
| 40" 1000mm | 50.00 1270 | 40.00 1016 | 2.00 51 | 49.00 1245 | 62.00 1575 |
| 42" 1050mm | 53.00 1346 | 42.00 1067 | 2.00 51 | 67.00 1702 | 74.00 1880 |
| 48" 1200mm | 60.00 1524 | 48.00 1219 | 2.00 51 | 65.00 1651 | 80.00 2032 |
| 54" 1350mm | 67.00 1702 | 54.00 1372 | 2.00 51 | 86.00 2184 | 100.00 2540 |
| 60" 1500mm | 73.00 1854 | 60.00 1524 | 2.00 51 | 81.00 2057 | 101.00 2565 |
| 72" 1800mm | 87.00 2210 | 72.00 1829 | 2.00 51 | 103.00 2616 | 121.00 3073 |